

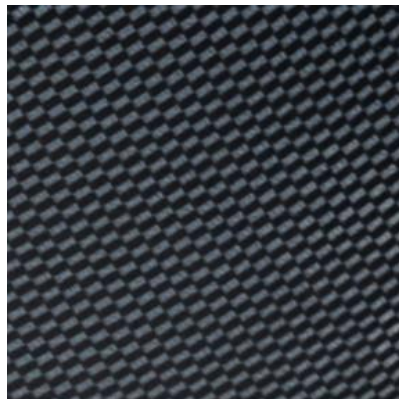
**TECHNICAL DATASHEET OLIVE HARVESTER**

**OLYTECH "MONDIAL 44"**

**COD. "845L" "845XL" "845SP"**



HEAD AND HANDLE  
WRAPPING



MONDIAL 44 is the electric olive harvester ideal for those looking for an extremely light machine, easy to use but at the same time very powerful for high harvesting results.

The collection action allows the operator all types of movement: combing (from top to bottom) or beating (continuous insertion and extraction of the machine from the branches, in all positions). Equipped with telescopic extension or fixed pole and ergonomic handle.

Designed with tilting head to enter easily into the branches and for a quick replacement of the tines.

Olytech MONDIAL 44 works with a **Brushless** electric motor 44V.

Available in 3 versions:

- **845L** extensible from 2100 mm to 3000 mm,
- **845XL** extensible from 2400 mm to 3600 mm,
- **845SP** with fixed pole

<b>OLYTECH 845L – 845XL – 845SP</b>	
TYPE OF MOVEMENT	2 TINE-HOLDER ARMS WITH HORIZONTAL ALTERNATING MOVEMENT - PATENTED -
ELEMENTS OF THE HEAD	4 + 4 QUICK REPLACEMENT CARBON FIBER TINES
MOTOR	BRUSHLESS 44V HIGH PERFORMANCE AND LOW CONSUMPTION
POWER SUPPLY	ELECTRIC 12V AND VOLTAGE CONVERTER
RECOMMENDED BATTERY	12V cc – 70-80 Ah
ENGINE PROTECTION	ELECTRONIC
LENGHT	845L FROM 2100 mm TO 3000 mm 845XL FROM 2400 mm a TO 3600 mm 845SP 2400 mm (FIXED)
TOTAL WEIGHT	845L = 2,4 Kg – 845XL = 2,7 Kg – 845SP = 2,0 Kg
PRODUCTIVITY	90÷130 kg/hour
SPEED	ADJUSTABLE 850 – 950 – 1050 RPM
POWER CABLE	15 mt WITH CLAMPS AND CONNECTORS
HANDLE	ERGONOMIC WITH SWITCH, SPEED CONTROL AND RESISTANT CABLE

**IMPORTANT: FOLLOW STRICTLY THE INSTRUCTIONS RELATED TO THE USE OF THE PRODUCTS,  
GIVEN ON THE INSTRUCTION MANUAL.**