



**850VET**  
**ANIMAL TRACK VOLPI**



Machine for the  
vaccination of chickens

[www.volpioriginale.it](http://www.volpioriginale.it)



## **INDEX**

**04** Spare part

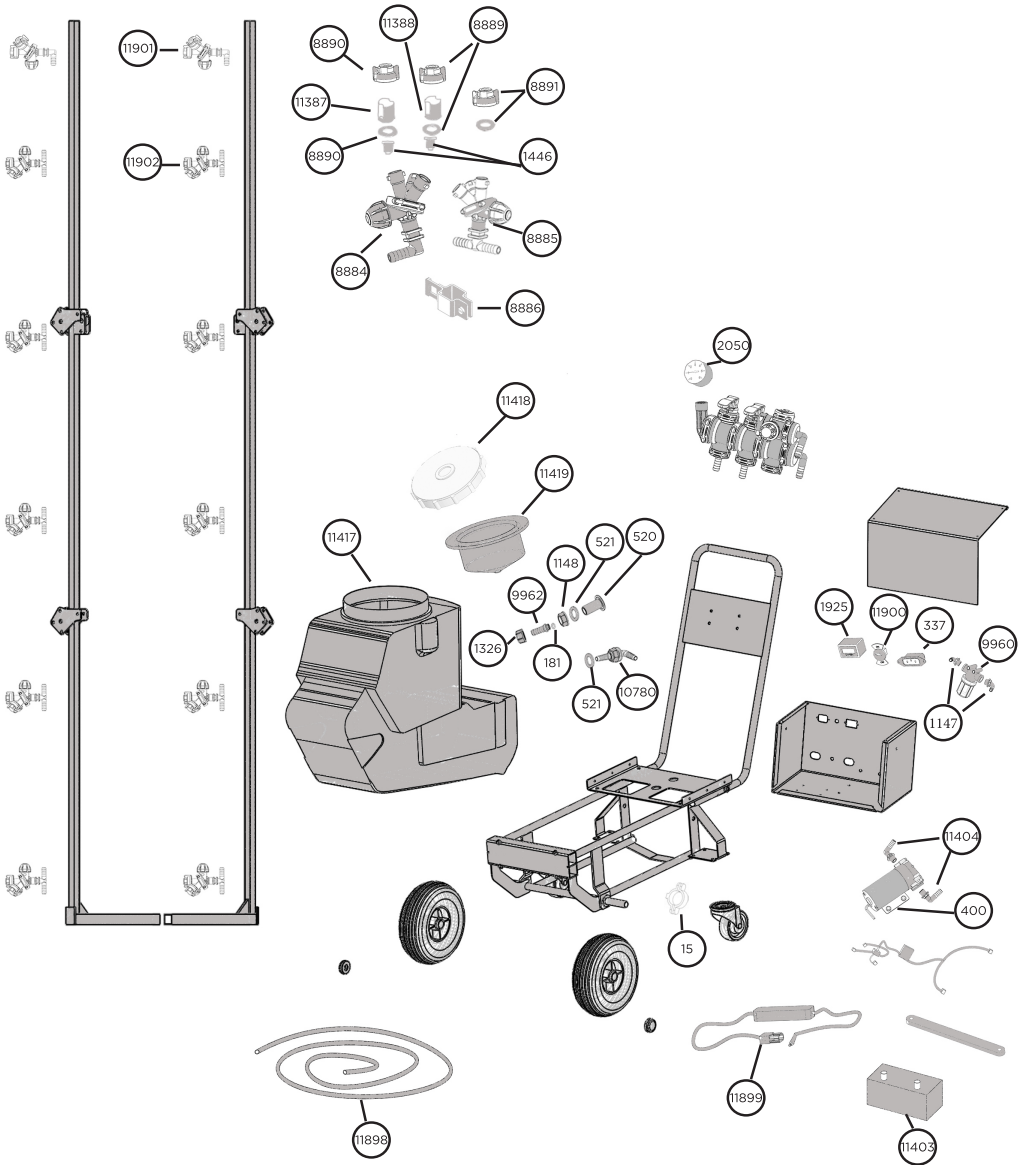
**06** Introduction

850VET ANIMAL TRACK VOLPI  
Technical specifications for the  
implementations of vaccines

**10** Machine assembly

**12** Troubleshooting

► SPARE PART



Cod.	Spare part
15	Metal clamp
181	OR G1/2 Joint
337	Plug base
400	Pump
520	Drain fitting G1/2
521	Flat joint G1/2
1147	Male curved fitting G1/2
1148	Through Nut G1/2
1326	Nut G1/2
1446	Nozzle filter
1925	Battery charge indicator
2050	Manometre
8884	L nozzle holder
8885	t nozzle holder
8886	Assembly bracket
8889	Yellow nut +flat joint
8890	Green nut +flat joint
8891	Black nut +flat joint
9960	Line filter
9962	Straight fitting for nut G1/2
10780	Male curved fitting pass-wall with nut G1/2
11387	Purple nozzle 60°
11388	Lilac nozzle 80°
11403	Battery
11404	Male curved fitting G3/8
11417	Tank 50 l
11418	50L Tank Cover
11419	50L tank filter
11898	Braided hose 10 m
11899	Battery charger
11900	On/Off switch
11901	Complete L nozzle holder
11902	Complete T nozzle holder

## ▶ INTRODUCTION

Thank you for purchasing 850VET ANIMAL TRACK VOLPI equipment, for proper operation and maintenance of your machine, please carefully follow the instructions in this manual.

The main advantages of implementing vaccines with 850VET ANIMAL TRACK VOLPI are:

- Improvement and facilitates working conditions.
- Reduces time spent on vaccination with respect to the current application with spray backpacks by 87.5%.
- Reduces the dead times since the volumetric capacity of the machine is 50L.
- Total control of the spray.
- Perfect combination between droplet size and the type of vaccine to be applied.
- Increased effectiveness of the vaccine.

## ▶ 850VET ANIMAL TRACK VOLPI TECHNICAL SPECIFICATIONS FOR THE IMPLEMENTATION OF VACCINES

Keep in mind that the various spray technologies aim to produce populations of droplets as possible accurate to the droplet size required for optimum efficacy of the specific formulation of the vaccine spray.

The droplet size recommendations for different vaccines are:

Vaccinate Mycoplasma: use thin droplet nozzle. ●

Vaccinate Bronchitis Infectieuse, Newcastle & Neumovirus.  
Use coarse droplet nozzle. ●

In very exceptional cases and when water quality is poor or when the distribution of the vaccine through the troughs are not insured in all birds, you can be vaccinated Gumboro (GUMBORO Nobilis D78) by spray thick film, using coarse droplet nozzle. ●

## VACCINATION PROCEDURE

To proceed to vaccination have to follow the technical specifications that are available below:

Adjust the height of the spray bars to match every level of the batteries. (Approximately 0.5 m). The nozzle should be positioned approximately at the height of the roof of the cage.

Activate the switch keeping three valves open, the return and the distributing the product to each spray bar for 15 seconds. Then regulate with the return regulator valve to the desired working pressure.

The working pressure must be 6 bars for nozzles of thin droplet (green cap / nozzle purple) and 3 bars for nozzles of coarse droplet (yellow cap / nozzle lilac). The pump includes a pressure switch which operates when the pressure exceeds 9 bars, protecting and shutting down. To achieve the required pressure will have to open or close the return valve (central).

Work constant pass of 0.8 to 1 m / s. Test is recommended prior to vaccination with 10 liters of water, this volume theoretically 10,000 chicks should be vaccinated, and count vaccinated chicks finalize. If the figure is very similar this is the thing to do the day of vaccination.

For spraying a thin droplet, use the purple nozzle with green thread.

Turn the nozzle holder until the nozzle is facing the cages. To obtain a coarse droplet use the nozzle lilac which thread is yellow. Turn the nozzle holder until the nozzle is facing the cages.

If you do not want to vaccinate some row of the battery turn the nozzle holder until the black color screw is facing the cages.

To check the quality of vaccination is essential to use the hydro-sensitive papers. These papers should be placed in the front or roof of cages located at different heights and at the beginning, middle and end of the hallway.

During vaccination you should stop all the ventilation system. It will start again at 20 minutes after ending.

When it appears that the pressure starts to decrease gradually, the battery is exhausted and needs to be put to charge by connecting the battery charger plug into the housing. It is very important to observe the charge status indicator, when the load level falls and the yellow light is activated, it should be stopped and put to load.

## 850VET ANIMAL TRACK VOLPI COMPONENTS

The principal components of 850VET ANIMAL TRACK VOLPI are:

### **Body of three nozzles and nozzle holders**

It is designed to facilitate the change of spray nozzles quickly and easily.

It has three positions, two spray and one closure.

It includes a valve that provides a non-drip closure.

### Purple nozzle conical jet of thin droplet (green nut). ●

The conical jet nozzle of thin droplet combines a compact jet nozzle and diffuser, which produces an empty jet conet of fine droplets.

The nut containing this nozzle is green.

Flows achieved (l / min) at different pressures (at a voltage of 12 V):

	6 bar	7 bar
Thin droplet nozzle	0.27	0.29

### Lilac conical jet nozzle of coarse droplet (yellow nut). ●

The conical jet nozzle of coarse droplet combines a compact jet nozzle and diffuser, which produces an empty jet conet of coarsest droplets.

The nut containing this nozzle is yellow.

Flows achieved (l / min) at different pressures (at a voltage of 12 V):

	3 bar	4 bar
Coarse droplet nozzle	0.3	0.35

### Blind Nozzle. ●

Is to be used on floors where no chicks at the time of vaccination. Usually when chicks are younger than 6 weeks. The thread is black.

### Nozzle filter.

Plastic filter that prevents clogging of the nozzle. In the event that product does not come out from nozzle, unscrew the nozzle and clean the filter.

### Suction filter grid of 50 mesh.

Suction filter retains particles from reaching the pump. To clean, unscrew, remove the filter and clean.

Is recommended before each treatment clean this filter.

When finished, clean the circuit, circulating five liters of clean water.

### Pump.

Electric diaphragm pump 12 v.

Current: 12 amps maximum.

Flow rate: 5.7 l / min max.

Pressure: 9 bar maximum.



## **Battery.**

Maintenance-free battery guaranteed by the manufacturer for 24 months after purchase. To validate this warranty do not eliminate documents supplied with the machine.

Medium Voltage 12V.

Capacity: 18 A / h.

Average autonomy: 2 hours, depending on the nozzle.

## **Battery Charger.**

Voltage: 12 volts.

Charging current 4 A.

With 25% battery the charge time is 3.5 hours, 2 hours with 50% and with 75% 1 hour.

## **50 Litre capacity.**

The tank has a capacity of 50 liters with a drain and a suction outlet furthermore an inlet to return the product.

## **Spray bars.**

Two steel rods with 6 adjustable nozzle holder for height according to the separation of cages for each installation.

## **Chassis.**

Iron structure which serves to support all the components

The wheels allow for easy and comfortable operation of the machine.

## **The control panel.**

The control panel includes:

Manometer

Valve which returns the excess flow into the tank and regulates pressure.

Right ball valve that distributes the flow to the spray bar in the right.

Left ball valve that distributes the flow to the spray bar in the left.

## **Pump box.**

Protects the battery and pump against external agents like dust, water, chemicals etc.

Includes a connection base that serves to connect the battery charger.

Includes a status indicator of the battery charge.

Switch. It connects or disconnects the machine.

## ► MACHINE ASSEMBLY

Unboxing the machine

Place the carrying handle with the control valves in the chassis housings, (figure 1).

3. Connect the two tank hoses (absorption and return) to the regulating valve. To do this, the pin must be removed and once inserted, replace it (figure 2 and 3)

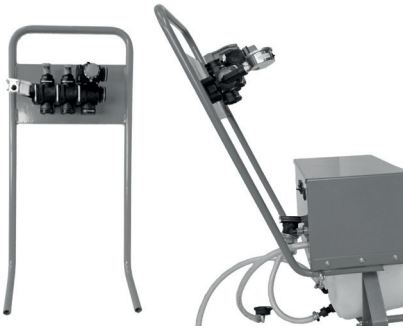


Figure 1

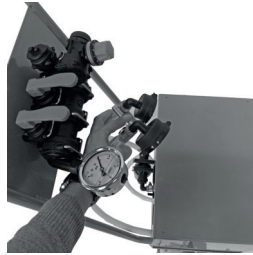


Figure 2

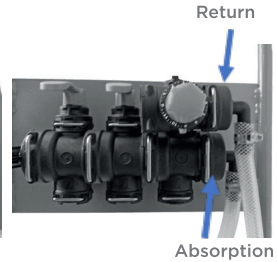


Figure 3

4. Fit the right and left adjustable bar on the machine, (figure 4).

5. Attach the hose of each adjustable rod to the bottom of the control valves (left and right). First you must remove the pin and once you have inserted the hose coupling you have to put it back, (figures 5 and 6).



Figure 4

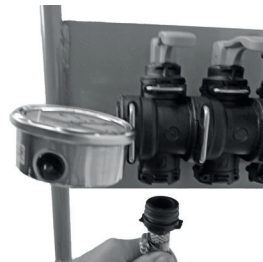


Figure 5



Figure 6

6. Pass the two bar hoses through the clamping clamps, (figure 7).

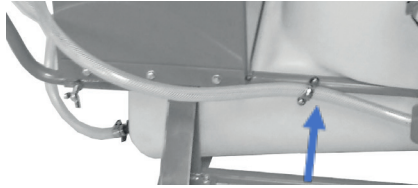
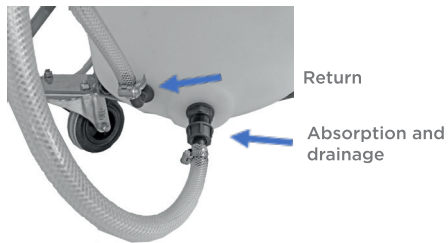


Figure 7 Clamping clamp

7. Operate the On / OFF switch for two seconds to check that it works, (figure 8).

8. Fill the tank with water (50 liters)

9. Ensure that the hydraulic connections are correct, place the desired nozzles in working position, and perform the speed test.



10. Check that the battery is never discharged, when the yellow bar is activated it indicates that the battery has reached its minimum level of charge and must finish and recharge. When the red bar is activated, it indicates that the battery charge level is below the minimum and may damage it if it does not stop and recharge (figure 8).

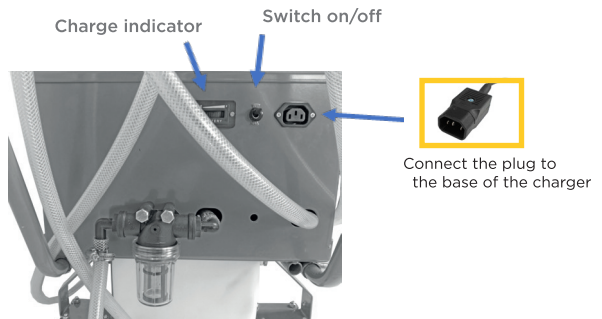


Figure 8

## ► TROUBLESHOOTING

PROBLEM	CAUSE	SOLUTION
Pump does not work.	Pressure switch blocked	Adjust firing pressure or replace the switch
	Pressure switch is working.	Open a bit the returning.
	Pump is failing.	check fuse and connections
	Pump is failing.	Replace with other.
Electric System does not work.	Failed fuse.	Change it.
	Failing connections.	Restore the connection.
	Battery does not give energy.	Charge the battery or replace it
	Damaged ON/OFF Switch	Change it.
A bad sparying.	Not enough flew, because aspiration filter is dirty.	Clean it.
	Nozzle filter is dirty.	Clean it.
	Partial blockage in some connection & impeding correct flew to arrive.	Check hoses & undo blocking.
	Pump fails.	Look over this specific subject.
	Spoiled nozzle.	Change it.
Pump does not take pressure.	Discharged battery.	Charge it.
	Acumulated air in the circuit.	Open the returning to maximum for 15 seconds, and adjuste pressure after.
Manometre needle ocillates a lot.	Dirty filter.	Clean it.
	Strangledhold in some connection.	Undo stranglehold.





CASALROMANO (MN) - Italy  
[www.volpioriginale.it](http://www.volpioriginale.it) - [commerciale@volpioriginale.it](mailto:commerciale@volpioriginale.it)