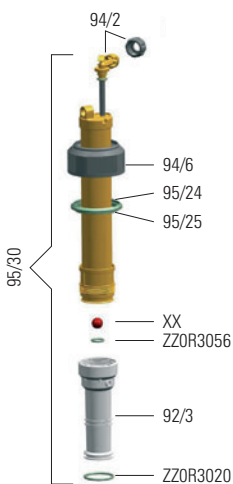
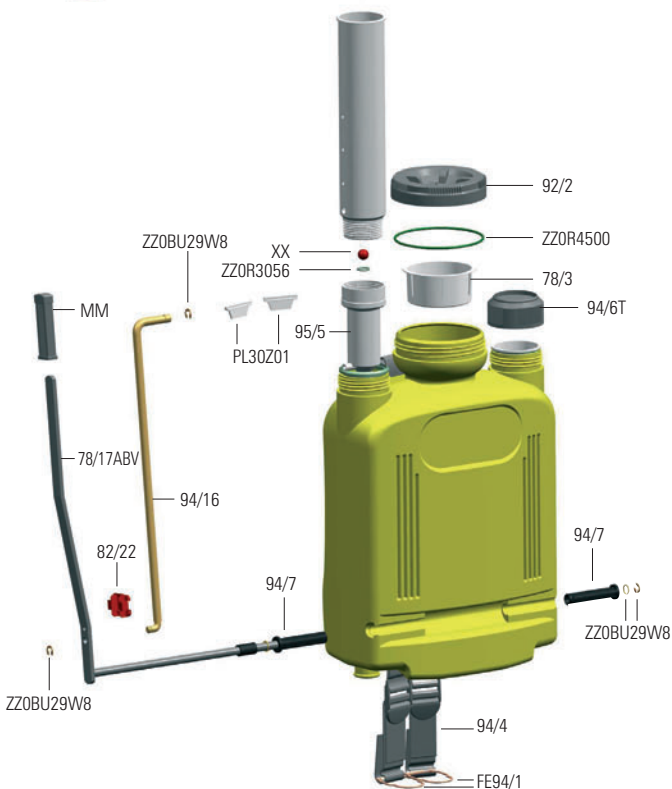
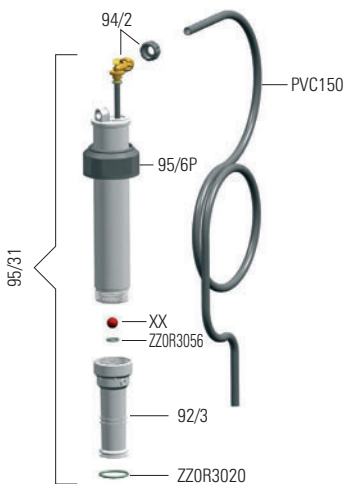


## POMPANTE IN OTTONE



## POMPANTE IN PLASTICA



Q.tà	Codice	Descrizione
2	<b>95/5</b>	Cilindro plastica per Record
2	<b>95/6P</b>	Ghiera guida pomp. Ø 52 Record plastica
2	<b>95/24</b>	Anello spezzato Ø 44
2	<b>95/25</b>	Anello tenuta
2	<b>95/30</b>	Corpo pompante ott. per Record
2	<b>95/31</b>	Corpo pompante plast. per Record
10	<b>ZZ0BU29W8</b>	Seeger Ø 8
10	<b>FE94/1</b>	Gancio per spallaccio per Super
2	<b>MM</b>	Manopola alla manetta
10	<b>ZZOR3-020</b>	OR tenuta pistone
10	<b>ZZOR3-020V</b>	OR tenuta pistone Viton®
10	<b>ZZOR3056</b>	OR sede valvola sferica
10	<b>ZZOR4500</b>	OR tenuta coperchio
10	<b>PL30 Z01</b>	Linguetta plastica per cinghie
10	<b>PVC150</b>	Tubo plastica 8x13 da cm 150
2	<b>TTS</b>	Canotto guida pompante Super
10	<b>XX</b>	Valvola sferica inox 5/8 W