

v.black



BY YOUR SIDE SINCE 1879

INNOVATION, TECHNOLOGY, DESIGN
IN THE SPRAYING FIELD



Davide e Luigi Volpi S.p.A.

Via San Rocco, 10 - 46040 Casalromano (MN) Italia • Tel. +39 0376 76009 - Fax +39 0376 76408
export@volpioriginale.it - commerciale@volpioriginale.it

www.volpioriginale.it





ELECTRIC SPRAYER 5 LT

V_BLACK Smart is an electric sprayer with battery. The 5 lt tank and the choice of using new molding technologies for the sprayer body, make it extremely light and perfect to be used in parks, orchards and gardens. It is equipped with lithium battery, rechargeable with micro usb, for an excellent independence during the working time and short charging time. The on-off switch is placed directly on the handle for a quicker work management. Easy to carry thanks to the practical and comfortable shoulder strap. The telescopic lance in steel and the brass nozzle ensure perfect spraying in wide working areas.

TECHNICAL FEATURES

TANK CAPACITY	5 LT
TANK MATERIAL	POLYPROPYLENE
BATTERY OPERATING TIME	UP TO 2,5 H
LT DELIVERABLE FOR EACH RECHARGE	UP TO 80 LT
LANCE	TELESCOPIC IN STAINLESS STEEL
LITHIUM RECHARGEABLE BATTERY	3,7 Vdc - 2,6 Ah - 9,62 Wh
SUPPLIED NOZZLES	ADJUSTABLE NOZZLE FOR SPRAYING
BATTERY CHARGE CONTROL	LED
SHOULDER STRAP	ADJUSTABLE
CHARGING MODE	MICRO USB
GASKETS	NBR (high breaking point - resistance to fats and oils)
PUMP	DIAPHRAGM
DELIVERY HOSE LENGHT	1,5 MT
FILTER	N° 1 FOR FILLING N° 1 FOR PUMP PROTECTION
FILLING OPENING DIAMETER	35 MM
MIN/MAX TEMPERATURE	5° C / 40° C
DIMENSIONS	176 X 255 X 532 MM
WEIGHT OF THE SPRAYER (EMPTY) WITH BATTERY	0,85 KG

ADJUSTABLE NOZZLE FOR SPRAYING

PRESSURE (BAR)	2,0	1,2
FLOW (LT/MIN)	0,33	0,56
WORKING TIME (HOURS)	2	2,5

CODE 19SME



>1<



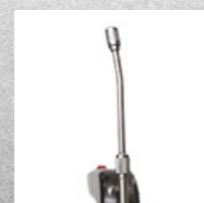
>2<



>3<



>4<



>5<

1> HANDGRIP WITH ON-OFF SWITCH

2> SHOULDER STRAP

3> FILTER FOR PUMP PROTECTION

4> MICRO USB CHARGING MODE AND LED INDICATOR

5> TELESCOPIC LANCE

v.black

PROTON



ELECTRIC COMPRESSION SPRAYER 7 LT

V_BLACK Proton is an electric compression sprayer. It has an excellent capacity of 7 lt and it is light, strong and reliable. All of the operation and control devices are placed in the upper part of the pump (the handgrip), so they are protected and away from the fluid of the tank. The aluminium lance with ergonomic handgrip click get and the brass nozzle ensures the perfect spraying in wide working areas. The shoulder strap and the handgrip enable the easy carrying of the sprayer.

T E C H N I C A L F E A T U R E S

TANK CAPACITY	7 LT
TANK MATERIAL	POLYPROPYLENE
PRESSURE	2,5 BAR
SECURITY VALVE	STANDARD - CALIBRATION 3BAR
PUMP	DIAPHRAGM
PRESSURE SWITCH	STANDARD - TO CONTROL THE MAXIMUM PRESSURE
RECHARGEABLE LITHIUM BATTERY	7,4 Vdc - 2,6 Ah - 19,24 Wh
CHARGING MODE	MICRO USB
BATTERY OPERATING TIME	UP TO 4,5 H
LT DELIVERABLE FOR EACH RECHARGE	UP TO 100 LT
LANCE	ALUMINIUM 400 MM CURVE
HANDGRIP	LEVER CLICK GET
SUPPLIED NOZZLE	ADJUSTABLE NOZZLE FOR SPRAYING
SHOULDER STRAP	ADJUSTABLE
GASKETS	NBR (high breaking point - resistance to fats and oils)
DELIVERY HOSE LENGHT	1,2 MT
FILTER	N° 1 FOR FILLING
FILLING OPENING DIAMETER	60 MM
MIN/MAX TEMPERATURE	5° C / 40° C
DIMENSIONS	230 X 215 X 460 MM
EMPTY WEIGHT OF THE SPRAYER WITH BATTERY	1,80 KG

ADJUSTABLE NOZZLE (DIAMETER 1,25 MM)	ROSE 60°			GUSH		
	FLOW (LT/MIN)	0,22	0,29	0,37	0,46	0,61
PRESSURE (BAR)	1,0	1,5	2,0	1,0	1,5	2,0

CODE 19PRE



> 1 <



> 2 <



> 3 <

1> HANDGRIP WITH ON-OFF SWITCH

2> LED CHARGE INDICATOR

3> ALUMINIUM LANCE AND SHOULDER STRAP

v.black

ELEKTRON



ELECTRIC SPRAYER 12 LT

V_BLACK Elektron has been designed with advanced technologies to facilitate weeding and spraying operations. The brass nozzle allows the uniform distribution of the product and the wide diameter of the opening ensures a no waste and no leak refilling. The innovative rechargeable lithium battery guarantees a long working time, measurable thanks to the supplied voltmeter. The practical electronic regulator enables the delivery at high or low pressures. The V_BLACK Elektron sprayer is equipped with comfortable adjustable shoulder straps to help the user during the operation.

TECHNICAL FEATURES

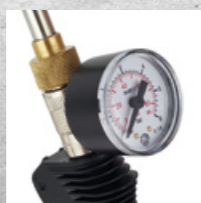
TANK CAPACITY	12 LT
TANK MATERIAL	POLYPROPYLENE
PRESSURE	UP TO 5 BAR
RECHARGEABLE LITHIUM BATTERY	12 Vdc - 6 Ah
BATTERY OPERATING TIME	ROSE JET SPRAYING UP TO 9 H FAN JET SPRAYING UP TO 15 H
LT DELIVERABLE FOR EACH RECHARGE	ROSE NOZZLE UP TO 270 LT FAN NOZZLE WEEDING UP TO 570 LT
LANCE	STAINLESS STEEL 60 CM
SUPPLIED NOZZLE	ADJUSTABLE BRASS NOZZLE FOR SPRAYING - Ø 1,3 FAN BRASS NOZZLE
SEALS	NBR (high breaking point - resistance to fats and oils)
PUMP	DIAPHRAGM, HIGH PERFORMANCES
PRESSURE REGULATOR	ELECTRONIC
BATTERY CHARGE CONTROL	VOLTMETER
DELIVERY HOSE LENGTH	1,5 MT
FILLING OPENING DIAMETER	105 MM
MIN/MAX TEMPERATURE	5° C / 40° C
DIMENSIONS	365 x 230 x 575 MM
EMPTY WEIGHT OF THE SPRAYER WITH BATTERY	3,5 KG
CODE 19VBE	



> 1 <



> 2 <



> 3 <



> 4 <



> 5 <

1> ADJUSTABLE SHOULDER STRAPS

2> RECHARGEABLE LITHIUM BATTERY

3> MANOMETER (OPTIONAL)

4> LANCE HOLDER

5> ELECTRONIC PRESSURE REGULATOR AND VOLTMETER TO CONTROL THE CHARGING LEVEL OF THE BATTERY

v.black

KOMPRESS



MANUAL COMPRESSION SPRAYER 6 LT

V_BLACK Kompress is a manual compression sprayer with a capacity of 6 lt, light, strong and extremely handy. Working on the handgrip the tank goes in pressure and it is ready to work for few minutes. The security valve placed on the tank ensures the worker from pressure overloads.

With its features, V_BLACK Kompress can be used in gardening, but also for household uses. The rigid tank guarantees a good working autonomy; the aluminium lance with the ergonomic handle click get and the brass nozzle ensure perfect spraying in wide working areas.

A practical handgrip allows the carrying of the sprayer and the comfortable shoulder straps help the user during the operation.

TECHNICAL FEATURES

TANK CAPACITY	6 LT
TANK MATERIAL	POLYPROPYLENE
PRESSURE	3 BAR
SECURITY VALVE	STANDARD - CALIBRATION 3 BAR
LANCE	ALUMINIUM 400 MM CURVE
HANDGRIP	LEVER CLICK
NOZZLE	ADJUSTABLE NOZZLE FOR SPRAYING
SHOULDER STRAP	ADJUSTABLE
SEALS	NBR (high breaking point - resistance to fats and oils)
DELIVERY HOSE LENGHT	1,2 MT
FILTER	N° 1 PFOR FILLING
FILLING OPENING DIAMETER	60 MM
MIN/MAX TEMPERATURE	5° C / 40° C
DIMENSIONS	230 X 215 X 460 MM
EMPTY WEIGHT OF THE SPRAYER	1,35 KG

ADJUSTABLE ATOMIZER (DIAMETER 1,25 MM)	ROSE 60°			GUSH		
	FLOW (LT/MIN)	0,22	0,29	0,37	0,46	0,61
PRESSURE (BAR)	1,0	1,5	2,0	1,0	1,5	2,0

CODE 19KPR



> 1 <



> 2 <



> 3 <

1> PRESSURE
DISCHARGE VALVE

2> HANDGRIP PUMP

3> ALUMINIUM LANCE
AND SHOULDER STRAP
FOR CARRYING

v.black

KOMFORT



SHOULDER SPRAYER 12/16 LT

V_BLACK Komfort is a manual pressure sprayer with a capacity of 12/16 lt. Light but strong and reliable, it is made by Volpi and, as all of their products, it is easy to maintain.

V_BLACK Komfort is dedicated to agricultural and gardening use, perfect for treatments with phitosanitary products in small and medium areas.

The tested system of pumping enables an easy action on the lever, without tiring the worker.

The tank guarantees the perfect balance between autonomy of work and weight. The aluminium lance with ergonomic click get handle and brass nozzle ensures the perfect spraying in wide working areas.

The handy backpack system with adjustable straps allows the shoulder carrying without tiring the worker, as well as the practical handgrip ensures the easy movement from place to place.

TECHNICAL FEATURES

TANK CAPACITY	12/16 LT
TANK MATERIAL	POLYETHYLENE HD
PRESSURE	6 BAR
LANCE	ALUMINIUM 700 MM BRASS 700 MM
HANDGRIP	LEVER CLICK GET BRASS WITH SPHERE VALVE
NOZZLE	ADJUSTABLE NOZZLE FOR SPRAYING
SHOULDER STRAP	ADJUSTABLE
SEALS	NBR (high breaking point - resistance to fats and oils)
DELIVERY HOSE LENGHT	1,2 MT
FILTER	N° 1 ADJUSTABLE NOZZLE FOR SPRAYING
OPENING FILLING DIAMETER	115 MM
MIN/MAX TEMPERATURE	5° C/40° C
DIMENSIONS	150 X 400 X 550 MM - 12 LT 190 X 400 X 550 MM - 16 LT
EMPTY WEIGHT OF THE SPRAYER	3,0/3,2 KG

ADJUSTABLE NOZZLE (1,25 MM)	ROSE 60°			GUSH		
	FLOW (LT/MIN)	0,77	0,93	1,10	1,18	1,39
PRESSURE (BAR)	1,7	2,3	2,9	1,7	2,3	2,9

CODE 9112KPC	Pump in plastic with aluminium lance and handgrip click get
CODE 9112KOS	Pump in brass with brass lance and brass handgrip with sphere valve
CODE 9116KPC	Pump in plastic with aluminium lance and handgrip click get
CODE 9116KOS	Pump in brass with brass lance and brass handgrip with sphere valve



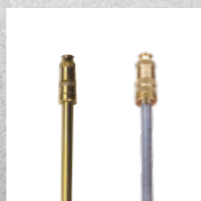
>1<



>2<



>3<



>4<



>5<

1> MODEL WITH BRASS PUMP DIAMETER 44

2> COMFORTABLE HANDLE

3> RIGID CONTROL LEVER IN METAL

4> BRASS/ALUMINIUM LANCE

5> HYDRO - MECHANICAL SYSTEM OF CONSTANT MIXING IN THE TANK